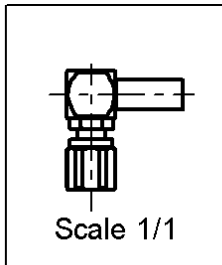
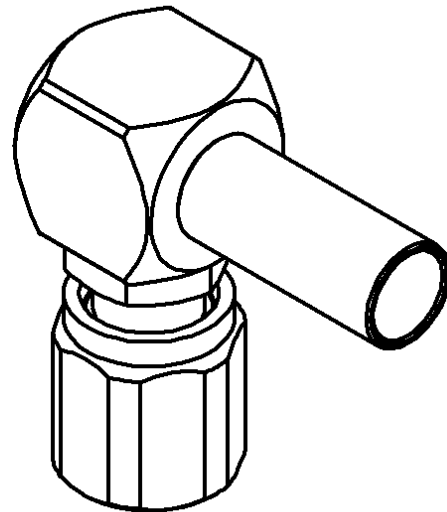
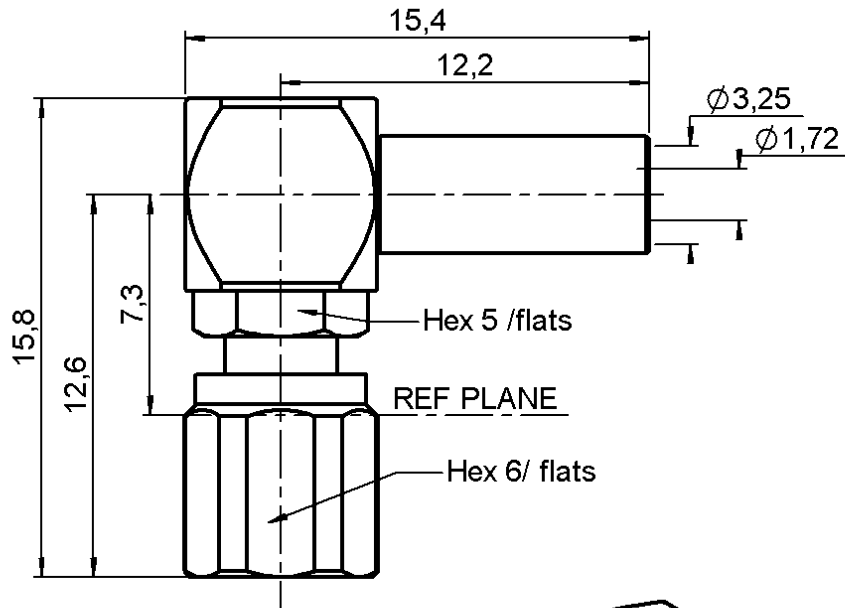


**RIGHT ANGLE PLUG CRIMP TYPE**

**R112.187.000**

**CABLE 2.6/50+75**

Series : SMC



All dimensions are in mm.



COMPONENTS	MATERIALS	PLATINGS ( $\mu\text{m}$ )
BODY	BRASS	GOLD 0.2 OVER NICKEL 2
CENTER CONTACT	BERYLLIUM COPPER	GOLD 1.3 OVER NICKEL 2
OUTER CONTACT	-	-
INSULATOR	PTFE	-
GASKET	-	-
OTHERS PARTS	BRASS	GOLD 0.2 OVER NICKEL 2
-	-	-
-	-	-

Issue : 0041 A

In the effort to improve our products, we reserve the right to make changes judged to be necessary.



**RIGHT ANGLE PLUG CRIMP TYPE**

**R112.187.000**

**CABLE 2.6/50+75**

Series : SMC

**PACKAGING**

Standard	Unit	Other
<b>100</b>	<b>'W' option</b>	<b>Contact us</b>

**SPECIFICATION**

**CABLE ASSEMBLY**

**ELECTRICAL CHARACTERISTICS**

Stripping	a	b	c	d	e	f
mm	1.50	5.50	16.0	0.00	8.00	0.00

Impedance		<b>50</b> Ω
Frequency		<b>0-10</b> GHz
VSWR	<b>1.30</b> +	<b>0.040</b> x F(GHz) Maxi
Insertion loss		<b>0.25</b> √F(GHz) dB Maxi
RF leakage	- (	<b>62</b> - F(GHz)) dB mini
Voltage rating		<b>335</b> Veff Maxi
Dielectric withstanding voltage		<b>1000</b> Veff mini
Insulation resistance		<b>1000</b> MΩ mini

Assembly instruction :

Recommended cable(s)

RG 316  
RG 179  
RG 188  
RG 187  
KX 22A

**MECHANICAL CHARACTERISTICS**

Cable retention

- pull off **110** N mini  
- torque **NA** N.cm

Center contact retention		
Axial force – Mating end		<b>10</b> N mini
Axial force – Opposite end		<b>10</b> N mini
Torque		<b>NA</b> N.cm mini

**TOOLING**

Recommended torque		
Mating		<b>30</b> N.cm
Panel nut		<b>NA</b> N.cm
Clamp nut		<b>NA</b> N.cm
A/F clamp nut		<b>0.000</b> mm

Part Number	Description	Hexagon
.	.	.
R282.235.003	CRIMPING DIES	3.25
R282.293.000	CRIMPING TOOL	-
R282.983.000	POSITONER FOR CRIMPING TOOL	-
R282.281.000	CRIMPING TOOL	2x4 (pos. 2)
R282.211.000	CRIMPING TOOL	3.25

Mating life		<b>500</b> Cycles mini
Weight		<b>0.000</b> g

**OTHERS CHARACTERISTICS**

**ENVIRONMENTAL**

Operating temperature		<b>-65/+165</b> °C
Hermetic seal		<b>NA</b> Atm.cm3/s
Panel leakage		<b>NA</b>

Issue : 0041 A

In the effort to improve our products, we reserve the right to make changes judged to be necessary.



**RIGHT ANGLE PLUG CRIMP TYPE**

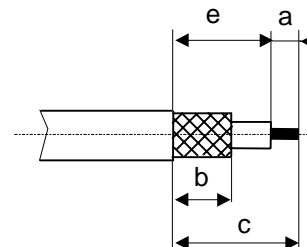
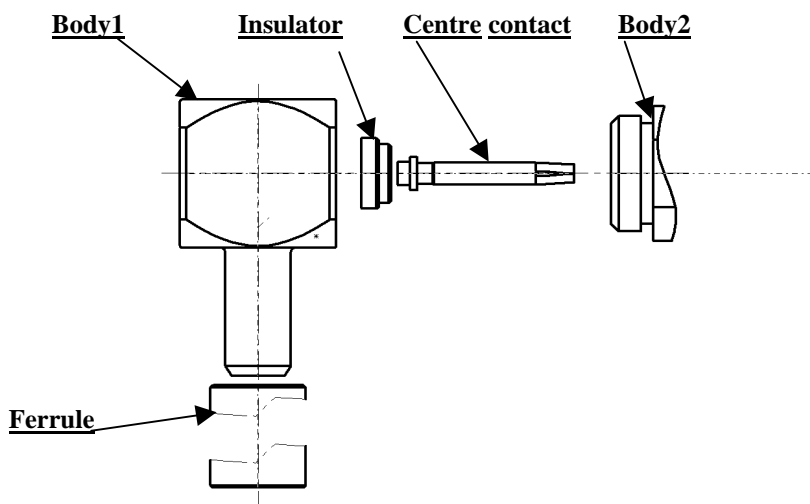
**R112.187.000**

**CABLE 2.6/50+75**

Series : SMC

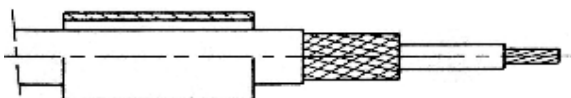
**COMPONENTS**

**STRIPPING DIMENSIONS**



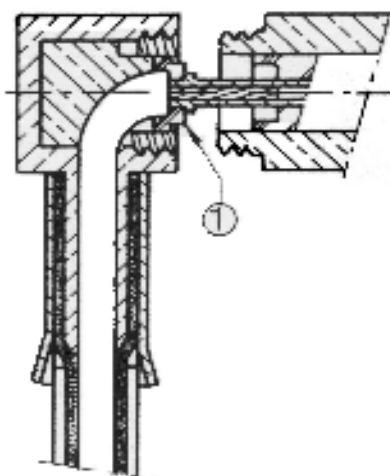
**1**

Mount the ferrule.  
Strip off the cable



**2**

- Push the cable into the body1 of the connector the jacket must be against the sleeve.
- Mount the insulator ①.
- Crimp the centre contact against the insulator with crimping tool.
- Remove the cable to put the insulator abutment the body2
- Crimp the ferrule with crimping tool.
- Mount the front insulator on the centre contact.
- Screw the body1 into the cable assembly.



**Issue : 0041 A**

In the effort to improve our products, we reserve the right to make changes judged to be necessary.

